

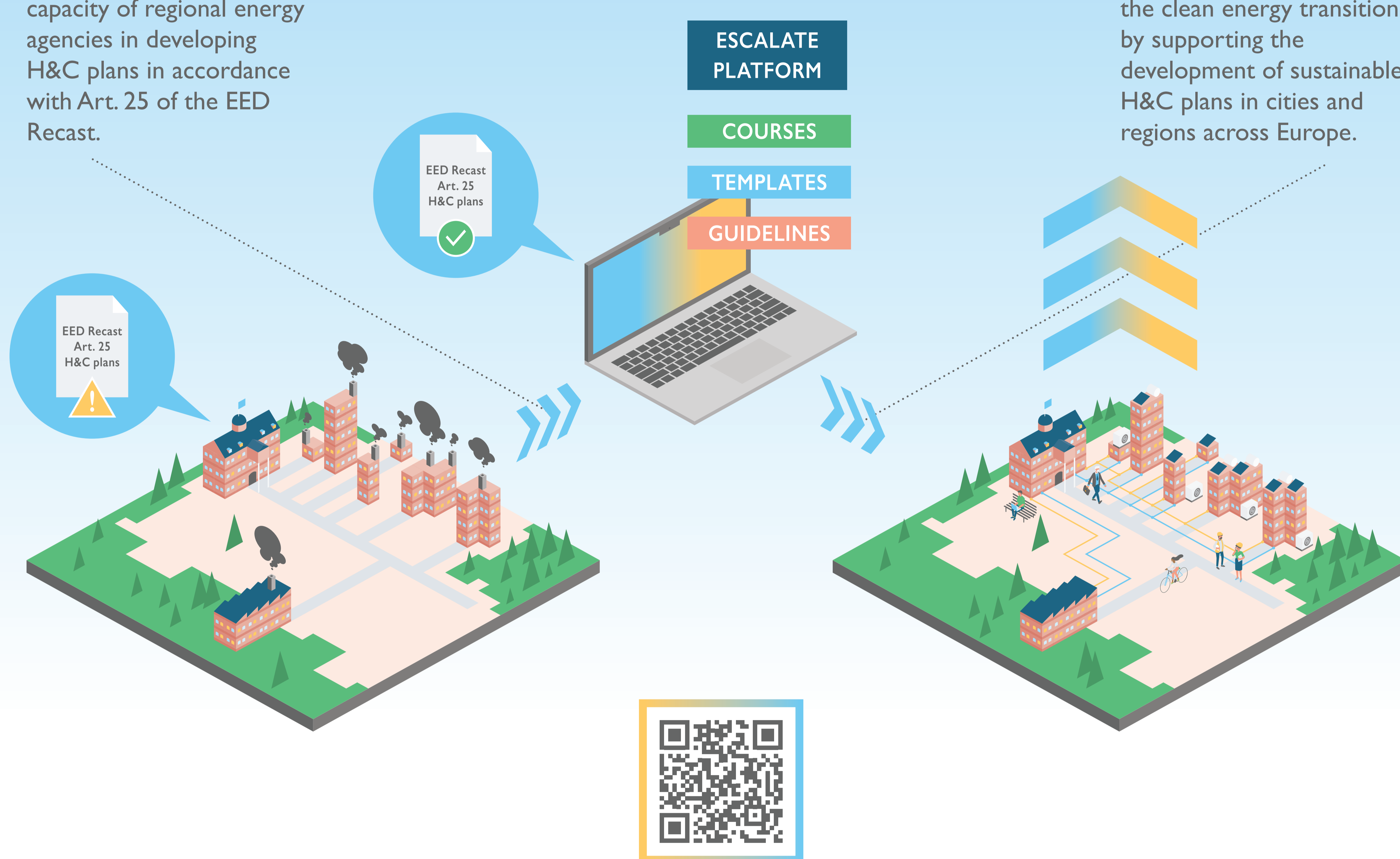


ESCALATE

Empowering Cities for Efficient Heating and Cooling

ESCALATE creates a unified methodology and a comprehensive training program to build the capacity of regional energy agencies in developing H&C plans in accordance with Art. 25 of the EED Recast.

ESCALATE will accelerate the clean energy transition by supporting the development of sustainable H&C plans in cities and regions across Europe.



Visit escalate-project.eu to learn more!

WHY

ESCALATE is accelerating Europe's shift to clean renewable energy by helping cities across the EU plan for more energy efficient heating and cooling.

WHO

- › Local authorities
- › Energy Agencies
- › Regional and Local Administrations
- › Energy Communities

HOW

By supporting the development of sustainable Heating and Cooling (H&C) plans in cities and regions across Europe

OUTPUTS

- › Methodological guidelines and templates for H&C planning
- › An open-access online learning platform
- › Available in 8 different languages
- › Train-the-trainer approach
- › Policy recommendations and public outreach

PARTNERS



Co-funded by the European Union

Co-funded by the European Union. Views and opinions expressed are however those of the author(s) only and do not necessarily reflect those of the European Union or CINEA. Neither the European Union nor CINEA can be held responsible for them.